

# TurboDrum IH™

Headworks® Horizontal Drum Screen

Headworks®



# TurboDrum IH™ In-channel Horizontal Drum Screen

## MUNICIPAL WASTEWATER

The treatment of municipal wastewater is experiencing tremendous change today with the development of advanced treatment systems such as Membrane Bio Reactors (MBR), Moving Bed Biofilm Reactors (MBBR) and Integrated Fixed-Film Activated Sludge (IFAS) processes. These processes have performed exceptionally well in achieving the new higher levels of treatment required today, but also require higher levels of screenings removal (liquid-solid separation) in front of the processes. Headworks In-channel Horizontal Drum Screens are a cost effective way to achieve these removal challenges. This equipment is available in a wide range of hydraulic and separation capacities to allow customizing for the most effective solution for your unique application.

- 304 or 316 stainless steel
- 1 mm to 5mm wedgewire or perforated plate
- Can handle up to 80 MGD (3.5 m<sup>3</sup>/s)
- Larger screen field area than conventional inclined drum screens
- No carry-over
- Integrated screw conveyor/compactor
- No mechanical serviceable parts in effluent process stream

## Municipal and Industrial Treatment

The Headworks TurboDrum IH horizontal drum screen is a unique, in-channel, rotary screen suitable for fine screening of sewage and industrial effluent. It is the ideal solution for large applications requiring fine screens with openings as fine as 1 mm and no carry-over.



### Municipal Applications

- MBR fine screens
- Package treatment plants
- Storm water
- Process screening
- Headworks screening
- Secondary Sludge screening

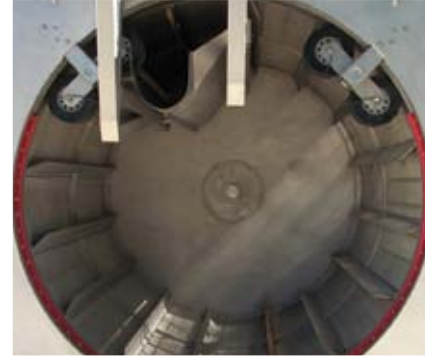


### OPTIONAL EQUIPMENT

The turbulent zone of influence created by the optional patented **TurboWash™** agitator loosens and emulsifies the organic BOD material on screenings.

## High Volume, Self Cleaning Screening

The TurboDrum IH assembly is comprised of a rotating drum supported on two sets of trunnion wheels at the inlet end and a bearing at the rear. A heavy duty HTD belt linked to the drive system drives the screen drum. The Drainer Screw Press (DSP) is an integral part of the TurboDrum IH assembly and combines washing, de-watering, conveying and Compaction in a single unit.



MODEL	PEAK FLOW GPM (m3/sec)		CHANNEL DIMENSIONS ft (mm)		Weight lb (kg)	Motor rating hP (kW)
	0.12 in. (3 mm) slot size	0.17 in. (4.5 mm) slot size	Width	Depth		
IH90/90	6340 (0.4)	7925 (0.5)	4.0 (1220)	3.9 (1180)	1763 (800)	0.5 (0.4)
IH120/120	11095 (0.7)	12680 (0.8)	5.0 (1520)	4.9 (1480)	3417 (1550)	2.0 (1.5)
IH150/150	19020 (1.2)	21081 (1.3)	6.2 (1896)	6.1 (1860)	4078 (1850)	2.0 (1.5)
IH175/175	28531 (1.8)	30116 (1.9)	7.0 (2140)	7.2 (2200)	5511 (2500)	3.0 (2.2)
IH200/200	31701 (2.0)	34395 (2.2)	8.0 (2440)	7.9 (2400)	7385 (3350)	3.0 (2.2)
IH200/250	41211 (2.6)	44381 (2.8)	8.0 (2440)	7.9 (2400)	8267 (3750)	3.0 (2.2)
IH250/250	42796 (2.7)	46283 (2.9)	10.0 (3020)	9.5 (2900)	8818 (4000)	4.0 (3.0)
IH250/300	53891 (3.4)	57061 (3.6)	10.0 (3020)	9.5 (2900)	9920 (4500)	4.0 (3.0)

The data contained in this table is for information only and values are typical. Please contact Headworks for confirmation.

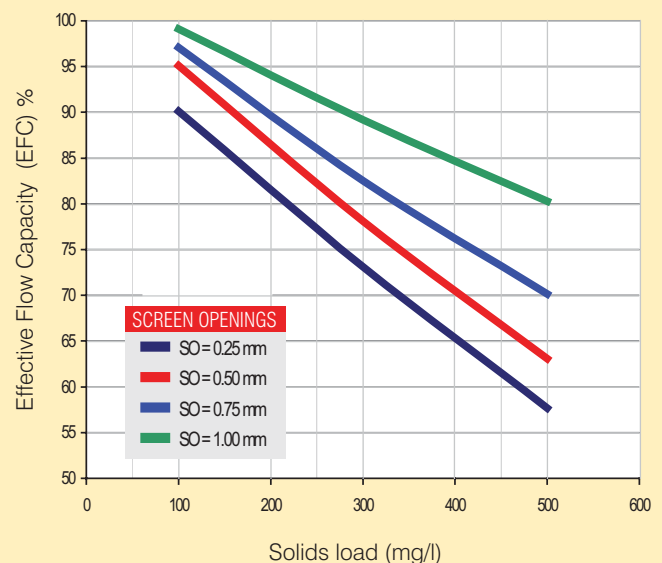
### Choosing the Right Screen for your Application

Use the chart to the right to determine the most effective solution for your application by measuring your Effective Flow Capacity (EFC) related to Total Suspended Solids (TSS) of Fat, Oil and Grease (FOG). Solids quality and concentration, and fats, oil and grease content can significantly affect EFC. A FOG content of 100 mg/l was considered for the curves in the chart. Typical municipal wastewater has an EFC of 250 mg/L

#### Industrial Applications

- Tanning
- Meat processors
- Fish farms
- Food processors
- Rendering plants
- Pulp and paper plants
- Wineries

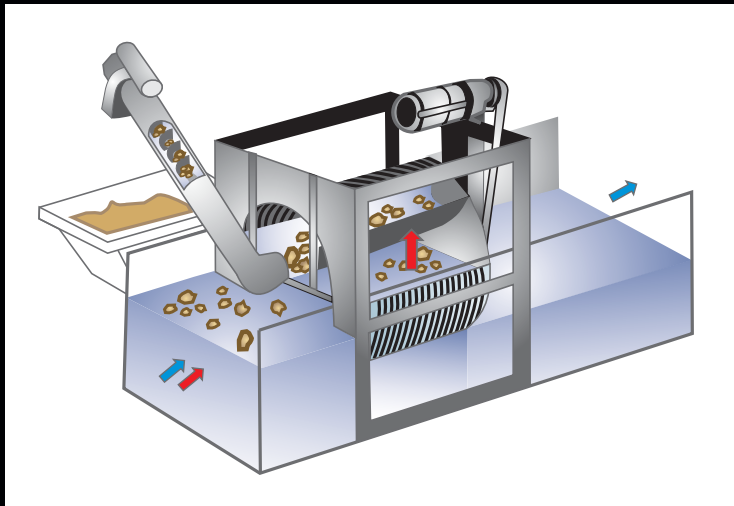
#### Effective Flow Capacity in Municipal Sewage



For a detailed explanation of Effective Flow Capacity (EFC), contact your local representative or call Headworks at +1.713.647.6667

#### TurboDrum - IH™

In-channel Horizontal  
Drum Screen



## **TurboDrum IH™**

Headworks® In-channel horizontally operating drum screen, with integral drain screw press



800 Wilcrest, Suite 340 | Houston, Texas 77042 | USA

Phone: +1.713.647.6667 | Fax: +1.713.647.0999 | E mail: [hw@headworksusa.com](mailto:hw@headworksusa.com)

[www.headworksusa.com](http://www.headworksusa.com)